

DISTRICT COURT - CSRBA
Fifth Judicial District
County of Twin Falls - State of Idaho

JUN 10 2022

By _____

Clerk

Deputy Clerk

IN THE DISTRICT COURT OF THE FIFTH JUDICIAL DISTRICT OF THE
STATE OF IDAHO, IN AND FOR THE COUNTY OF TWIN FALLS

In Re CSRBA) PARTIAL DECREE PURSUANT TO I.R.C.P. 54(b)
Case No. 49576) FOR FEDERAL RESERVED
)
) WATER RIGHT NO. 94-09529R

NAME AND ADDRESS: UNITED STATES OF AMERICA ACTING THROUGH
USDA FOREST SERVICE
550 W FORT ST MSC 033
BOISE ID 83724

SOURCE: See Attachment 1, Column A TRIBUTARY: See Attachment 1, Column B

Sources are located on National Forest System Land in the Copper Creek-Lower Little North Fork Coeur d'Alene River subwatershed (HUC12 170103010604).

QUANTITY: The amount of water necessary to control and suppress forest fires.

PRIORITY DATE: 07/10/1979

POINT OF DIVERSION: See Attachment 1, Columns C through G

PURPOSE AND PERIOD OF USE: PURPOSE OF USE PERIOD OF USE
Administrative-Fire Suppression 01/01 - 12/31

PLACE OF USE: National Forests in Idaho and the Kaniksu, Lolo and Kootenai National Forests in Montana.

See Attachment 2.

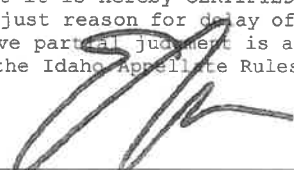
OTHER PROVISIONS NECESSARY FOR DEFINITION OR ADMINISTRATION OF THIS WATER RIGHT:

This right is limited to the intermittent diversion and use of water for the purpose of suppressing wildfires. This water right shall not be used as a basis to prevent the future appropriation of water.

This partial decree is subject to such general provisions necessary for the definition of the rights or for the efficient administration of the water rights as may be ultimately determined by the Court at a point in time no later than the entry of a final unified decree. Idaho Code § 42-1412(6).

RULE 54(b) CERTIFICATE

With respect to the issues determined by the above partial judgment it is hereby CERTIFIED, in accordance with Rule 54(b), I.R.C.P., that the court has determined that there is no just reason for delay of the entry of a final judgment and that the court has and does hereby direct that the above partial judgment is a final judgment upon which execution may issue and an appeal may be taken as provided by the Idaho Appellate Rules.







Eric J. Wildman
Presiding Judge of the
Coeur d'Alene-Spokane River Adjudication

Attachment 1

	A	B	C	D	E	F	G
1	SOURCE NAME	TO TRIBUTARY	TOWNSHIP	RANGE	SECTION	QQ	SURVEY CODE AND NUMBER
2	Unnamed Stream	Little North Fork Coeur d'Alene River	49N	01E	02	NENE	L 1
3	Little North Fork Coeur d'Alene River	North Fork Coeur d'Alene River	49N	01E	02	NENW	L 3
4	Little North Fork Coeur d'Alene River	North Fork Coeur d'Alene River	49N	01E	02	NWNE	L 2
5	Unnamed Stream	Little North Fork Coeur d'Alene River	49N	01E	02	SENE	
6	Unnamed Stream	Little North Fork Coeur d'Alene River	49N	01E	02	SENW	
7	Unnamed Stream	Little North Fork Coeur d'Alene River	49N	01E	02	SWSW	
8	Little Tepee Creek	Little North Fork Coeur d'Alene River	49N	01E	04	NENW	L 3
9	Little North Fork Coeur d'Alene River	North Fork Coeur d'Alene River	49N	01E	04	NESW	
10	Little Tepee Creek	Little North Fork Coeur d'Alene River	49N	01E	04	NESW	
11	Unnamed Stream	Little North Fork Coeur d'Alene River	49N	01E	04	NESW	
12	Little Tepee Creek	Little North Fork Coeur d'Alene River	49N	01E	04	NWNW	L 4
13	Little North Fork Coeur d'Alene River	North Fork Coeur d'Alene River	49N	01E	04	NWSE	
14	Unnamed Stream	Little North Fork Coeur d'Alene River	49N	01E	04	NWSE	
15	Little North Fork Coeur d'Alene River	North Fork Coeur d'Alene River	49N	01E	04	NWSW	
16	Little North Fork Coeur d'Alene River	North Fork Coeur d'Alene River	49N	01E	04	SENE	
17	Little Tepee Creek	Little North Fork Coeur d'Alene River	49N	01E	04	SENW	
18	Little North Fork Coeur d'Alene River	North Fork Coeur d'Alene River	49N	01E	04	SESE	
19	Unnamed Stream	Little North Fork Coeur d'Alene River	49N	01E	04	SESE	
20	Unnamed Stream	Little North Fork Coeur d'Alene River	49N	01E	04	SESW	
21	Little North Fork Coeur d'Alene River	North Fork Coeur d'Alene River	49N	01E	04	SWNW	
22	Little Tepee Creek	Little North Fork Coeur d'Alene River	49N	01E	04	SWNW	
23	Unnamed Stream	Little North Fork Coeur d'Alene River	49N	01E	04	SWSE	
24	Owl Creek	Little North Fork Coeur d'Alene River	49N	01E	08		
25	Unnamed Stream	Little North Fork Coeur d'Alene River	49N	01E	08		
26	Unnamed Stream	Owl Creek	49N	01E	08		
27	Unnamed Stream	Little North Fork Coeur d'Alene River	49N	01E	12		
28	Little North Fork Coeur d'Alene River	North Fork Coeur d'Alene River	50N	01E	35	SWSE	L 2
29	Unnamed Pond	Little Tepee Creek	49N	01E	04		
30	Unnamed Pond	Sink	49N	01E	04		

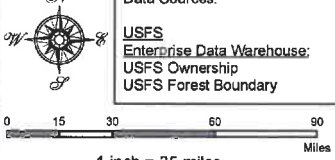
Attachment 2
Place of Use Map Fire Suppression - Water Right No. 94-09529R
National Forests in Idaho and the Kaniksu, Lolo and Kootenai NF in Montana

Key to Features

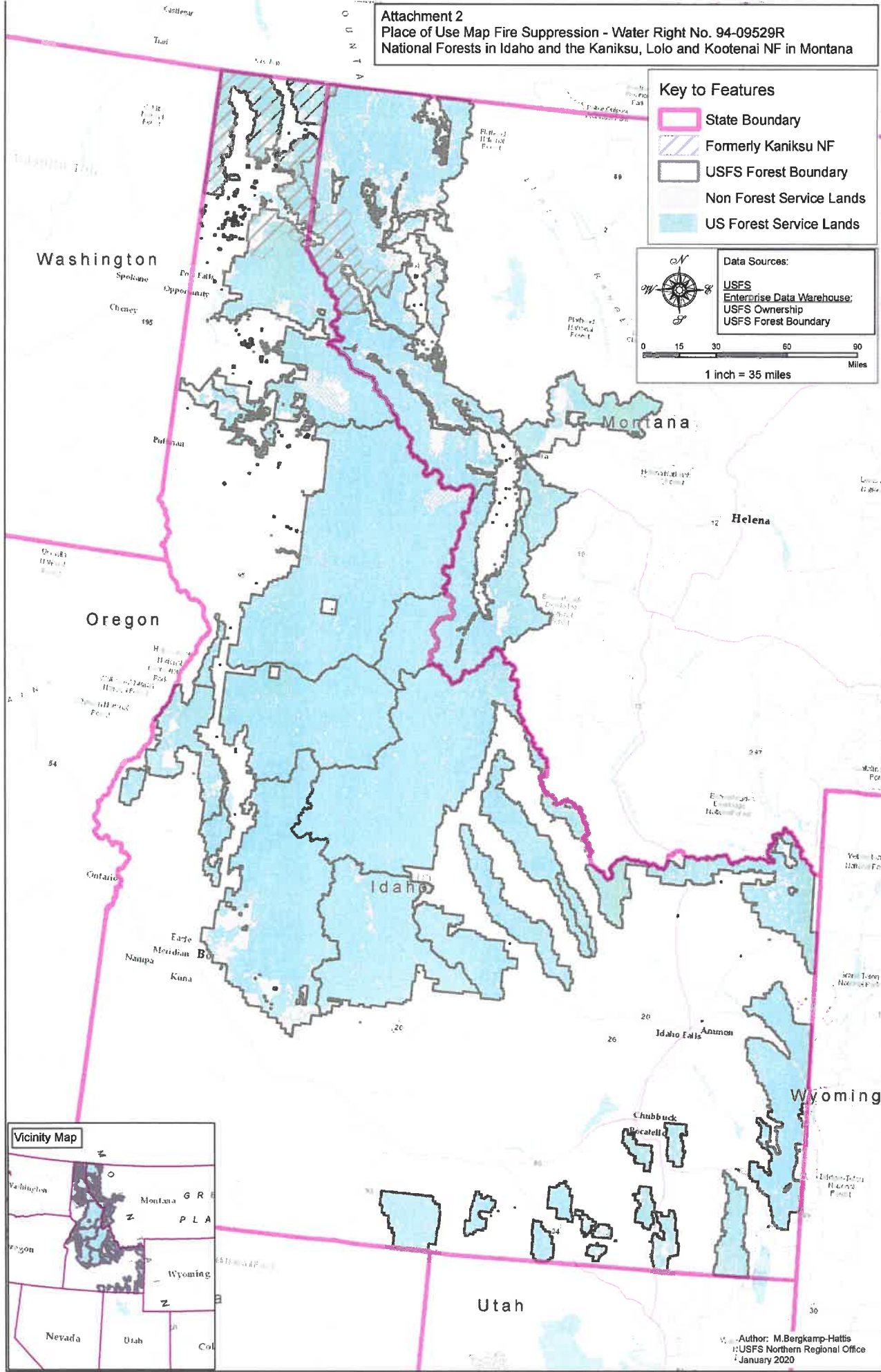
-  State Boundary
-  Formerly Kaniksu NF
-  USFS Forest Boundary
-  Non Forest Service Lands
-  US Forest Service Lands

Data Sources:

- USFS
- Enterprise Data Warehouse:
- USFS Ownership
- USFS Forest Boundary



0 15 30 60 90 Miles
 1 inch = 35 miles



Author: M. Bergkamp-Hattis
 USFS Northern Regional Office
 January 2020